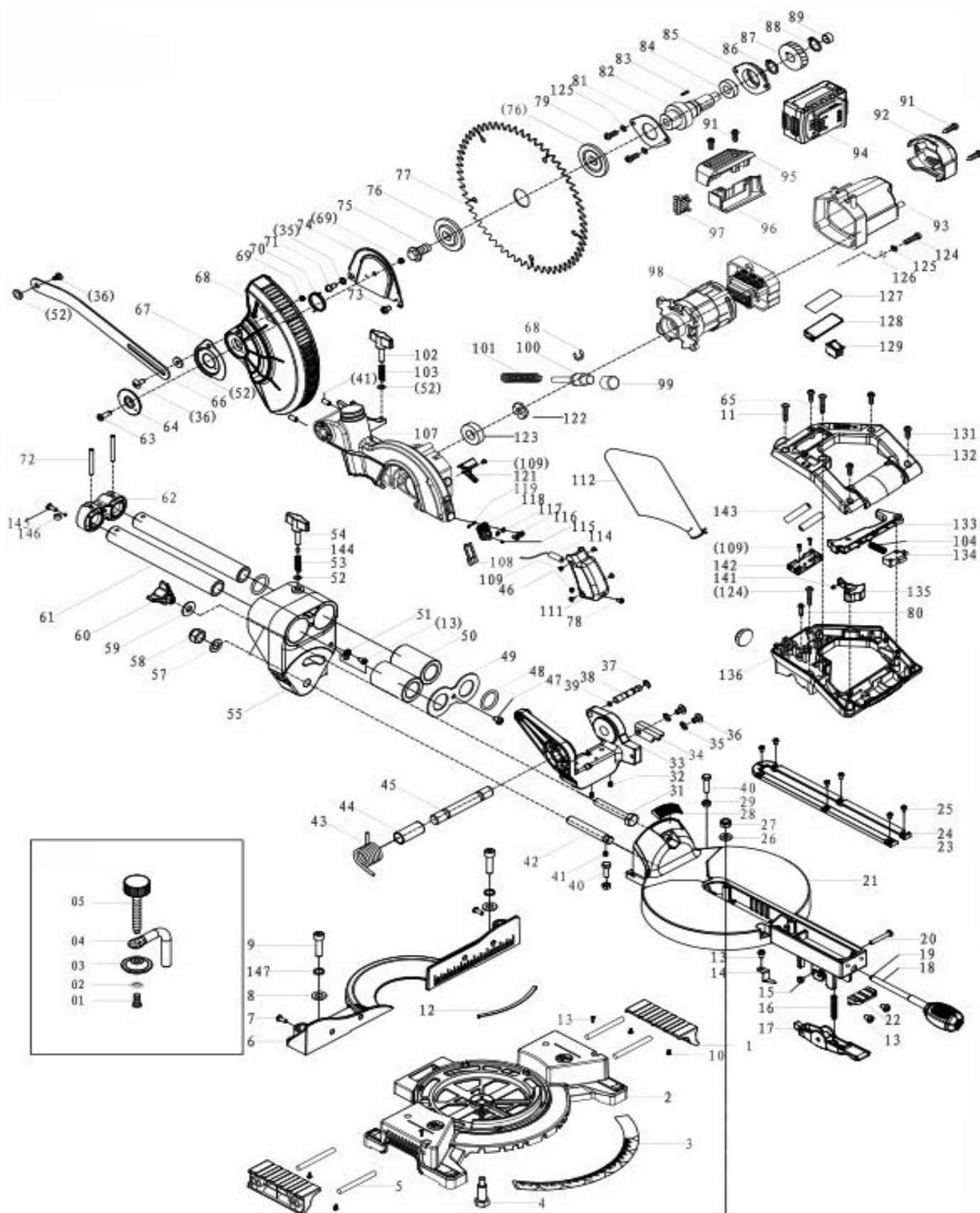


VMS 18520





EXPLODED PARTS LIST

Year: 2020

Page(s): 2/3

VMS 18520

No	Code	Name	Qty	No	Code	Name	Qty
1	67715	Extension table		49	67739	Bearing cover	
2	67716	Base		50	66679	Ø40×Ø25×58 linear bearing	
3	67717	Base scale		51	67740	Mitre cutting pointer	
4	67718	The center shaft of the turntable		52		Ø6 Flat gasket	
5	67719	Extension pole		53	67741	Little spring	
6	67720	Cross-bar		54	67742	M6X20A small knob	
7	67721	M6×12Cross pan head screw		55	67743	Turntable bracket	
8		Ø10flat gasket		56			
9		M10×25soket head cap screw		57		Ø12 flat gasket	
10		M5×8Cross head self-tapping screw		58		M12 locknut	
11		M5×55Cross pan head screw		59		Ø10 Big flat gasket	
12	67722	Turntable sheet steel		60	67744	Bracket lock handle	
13		M5×8 Cross pan head screw		61	67745	Retractable bar	
14	67723	Turntable pointer		62	67746	Retractable bar rear cover	
15		M5 locknut		63		M6×20 Cross countersunk head screw	
16	67724	Press spring		64	67747	Ring	
17	67725	Limiting handle		65		ST4.8×45 Cross head self-tapping screw	
18	67726	Turntable handle		66	67748	Connecting rod	
19		Turntable pad		67	67749	Small cap	
20		M5×35Hexagon socket non-standard s		68	66680	Rransparent cover	
21	67727	Turntable		69		M6 locknut	
22	67728	Extension block of turntable		70	67750	Transparent cover spring	
23	67729	Auxiliary incision (left)		71		M6×10 Non-standard step screw	
24	67730	Auxiliary incision (right)		72	67751	Ø5×45 elastic cylindrical pin	
25		M4×8 Cross pan head screw		73		M6×10 Cross head self-tapping screw	
26		Ø8 big flat gasket		74	67752	Big cap	
27		M8 locknut		75		M8×18 Left hex flange bolt	
28	67731	Bevel cutting scale		76		Pressing plate	
29		M6 hex nut		77		Saw blade	
30				78		M4×14 Cross pan head screw	
31		M10×65 HEX HEAD CAP SCREW		79		M5×16 Cross pan head screw	
32	67732	Ø5×35 elastic cylindrical pin		80		ST4.8×20 Cross head self-tapping screw	
33	67733	Head cover bracket		81	67753	Bearing gland	
34	67734	(Depth) locating plate		82	67754	Output shaft	
35		Ø8 Wave spring washer		83	67755	4×4×12 flat key	
36		M6×12 Non-standard step screw		84		6002Z bearing	
37		Ø8 spindle circlip		85	67756	Bearing chamber	
38	67735	Head cover self-locking pin		86		Ø15 shaft spring	
39		Ø7.5×1.9"O"-rings		87	67757	Big gear	
40		M6×25HEX HEAD CAP SCREW		88		Ø12 shaft circlip	
41		M6×10Hexagon socket set screw		89	67758	HK0910 roller bearing	
42		Rotatory spindle		90			
43		Big torsional spring		91		ST3.9×12 Cross head self-tapping screw	
44	67736	Torsional spring sleeve		92	67759	Housing back cover	
45	67737	Head cover pin		93	67760	Housing	
46		M4 hex nut		94		Battery pack	
47		M6×8 Cross pan head screw		95	67761	Battery pack seat (upper)	
48	67738	Ø31×Ø24.6×3.2 "O"-rings		96	67762	Battery pack seat (lower)	



EXPLODED PARTS LIST

Year: 2020

Page(s): 3/3

VMS 18520

No	Code	Name	Qty	No	Code	Name	Qty
97	67763	Battery insert pole		145		ST4.8×12 Cross head self-tapping screw (flat)	
98	67764	Motor and Motor Controller		146		Small clip	
99		Self locking cap		147		Ø8 spring washer	
100	67765	Self locking pin		148		M5×12 Cross pan head screw	
101		Self locking corclip		149		Ø6 flat washer	
102	67766	Depth control handle		150		Jaw iron (pressure plate)	
103	67767	Depth control spring		151		Clamp locating lever	
104	67768	Switch spring		152		(clamp) Hand wheel	
105							
106							
107	67769	Head cover					
108		Dustproof plate		01	66681	M5×12 Cross pan head screw	
109		M4×8 Cross countersunk head screw		02		Ø6 flat washer	
110				03		Pressure plate	
111	67770	Laser shield		04		Clamp locating lever	
112	67771	Dust bag		05		(clamp) hand wheel	
113							
114		Laser					
115		M4×6 Hexagon socket set screw					
116		M3×8 Cross pan head screw					
117		Ø3 flat gasket					
118		Laser base					
119		Ø4 Corrugated elastic washer					
120							
121	67772	Linear cover					
122	67773	Brake block					
123		6200 bearing					
124		M5×30 Cross pan head screw					
125		Ø5 spring washer					
126		Ø5 flat gasket					
127		Battery case label					
128		Battery case cover					
129	67774	Laser Switch					
130							
131		ST3.9×16 Cross head self-tapping screw					
132	67775	Handle cover					
133	67776	Switch button					
134	67777	Switch					
135	67778	Switch self-locked button					
136	67779	Handle					
137							
138							
139							
140							
141	67780	Switch self-locking spring					
142	67781	Battery case					
143		Battery					
144		Lock nut head					